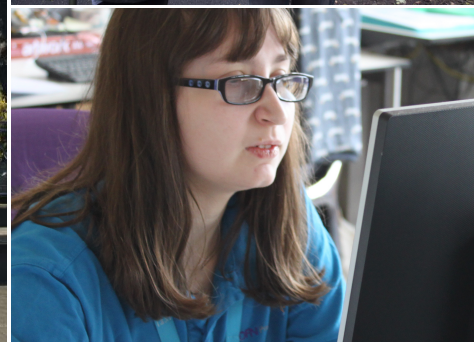
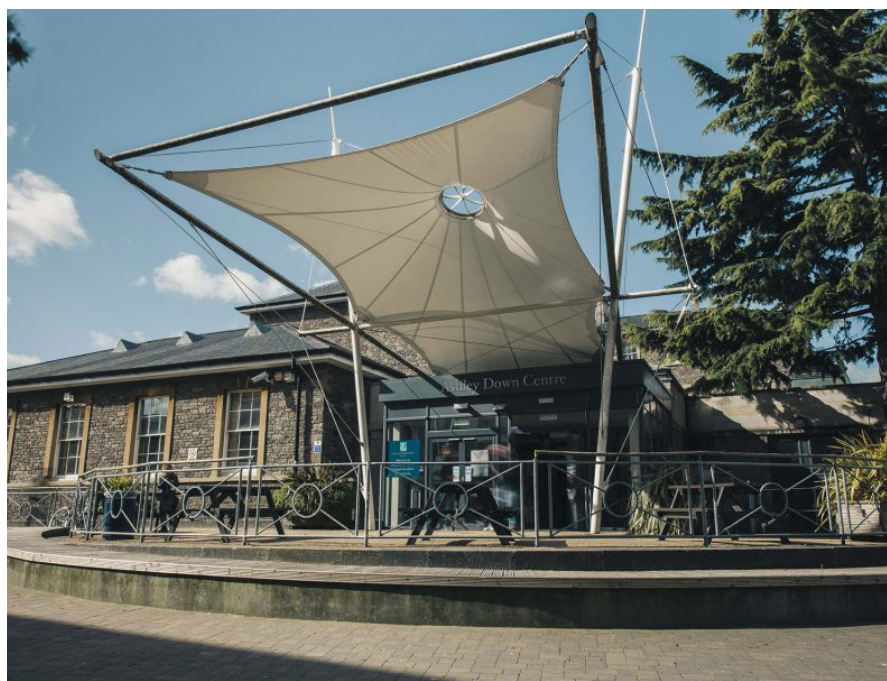


# City Of Bristol College

## Ashley Down & South Skills Academy



Mary Moor: 01173 125000  
[mary.moor@cityofbristol.ac.uk](mailto:mary.moor@cityofbristol.ac.uk)

Ashley Down Centre,  
Ashley Down Road,  
Bristol,  
BS7 9BU

South Bristol Skills Academy  
Hengrove,  
Bristol,  
BS14 0DB

City of Bristol College offers a selection of courses designed to cater for students with additional needs at both their Ashley Down Campus and South Bristol Skills Academy.

- Students will have a choice between a variety of courses, which run for 16-18 year olds or 16-24 year olds.
- Courses such as: Pathways X which has been specially designed for young adults with Autism. The course is highly structured and supported in the first year,
- There are a list of life skills courses offered include: Progression into Independence, Sensory Learning and Pathways to Employment.
- Each student will receive individualised targets based on their EHCP outcomes.